

I/Y - Branch Closure



1. Description

It is designed by modular method to change the length of closure and branch direction. It is possible to assemble or disassemble the closure without any special tools. The maintenance of I/Y-branch closure can be done without cutting the ducts, and can be completed only by reopening upper modular part. I/Y-branch closure is designed to connect two microduct bundles and to branch-off tubes without any interruption of connectivity.

2. Benefit

- Light weight
- Easy installation
- Easy branching
- Microduct protection at joint/distribution point
- Can accommodate various types of microduct

3. Technical Specifications

Item	Product Code	W(mm)	D(mm)	H(mm)	Weight(g)	Thickness (mm)	material	Port No.
I/Y Branch Closure	RUK4K	400	113	76	584	3	PP	2/2

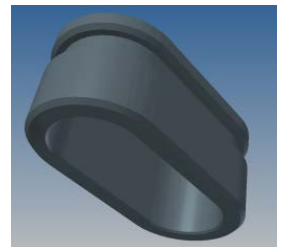
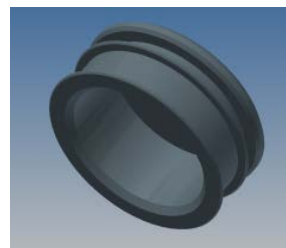
4. Application duct

Main Port

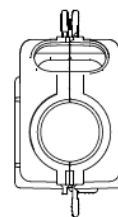
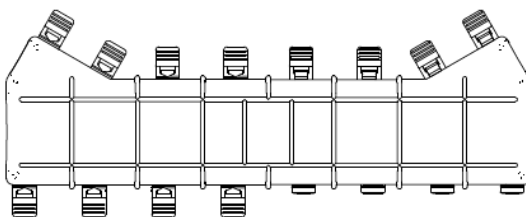
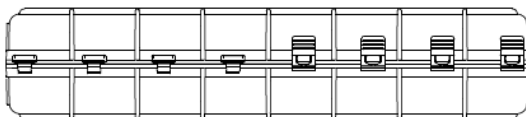
- Below DB 12/10mm 7way (OD:44.8mm)
- Below TWD 14/10mm 4way (OD:30.0mm)

Distribution Port

- Below DB-HS 12/10mm 2way (OD:31.0x19.0mm)



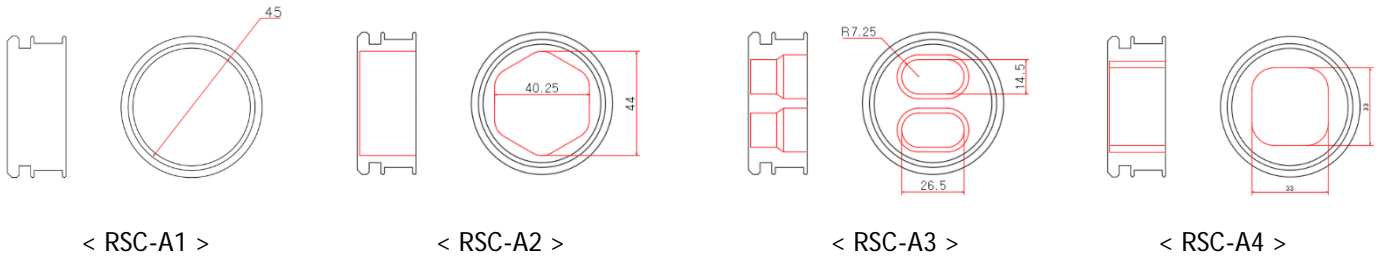
5. Design Overview



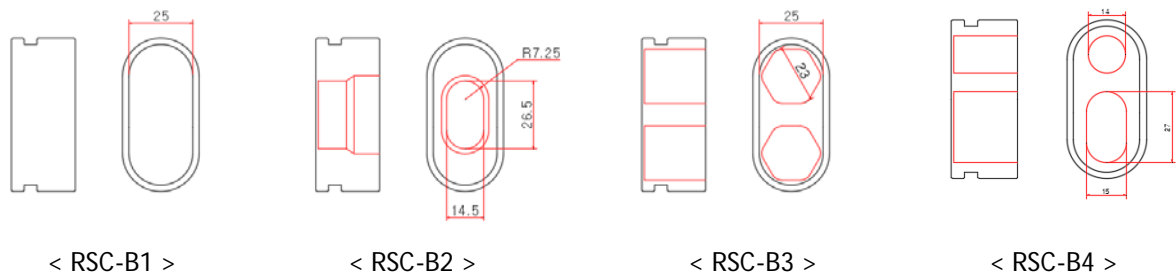
6. Rubber Sealing Cap

Rubber sealing cap consists of Main port and Distribution port, and the Microduct, according to its different type and configuration, can be applied to different Rubber Sealing Cap.

Main Port



Distribution Port



Rubber Sealing Cap Specifications

Item	Product Code	Dimension (mm)	Application Port	Hole size (mm)	Weight (g)
Rubber Sealing Cap	RSC-A1	Ø60 x 25	Main	Ø45	26
Rubber Sealing Cap	RSC-A2	Ø60 x 25	Main	40.25 x 44	33
Rubber Sealing Cap	RSC-A3	Ø60 x 25	Main	14.5 x 26.5 x 2holes	51
Rubber Sealing Cap	RSC-A4	Ø60 x 25	Main	33 x 33	41
Rubber Sealing Cap	RSC-B1	60 x 30 x 25	Distribution	25 x 49	22
Rubber Sealing Cap	RSC-B2	60 x 30 x 25	Distribution	14.5 x 28.5	38
Rubber Sealing Cap	RSC-B3	60 x 30 x 25	Distribution	23 x 25 x 2holes	26
Rubber Sealing Cap	RSC-B4	60 x 30 x 25	Distribution	Ø14, 15 x 27	30

7. I/Y - Branch Closure User Manual



Prepare I/Y branch closure, tools, connectors, etc.



Cut the certain length of microduct to fix the closure size



Cut the sheath by round cutter.



Remove the sheath by using slit.



Complete sheath cutting on both microducts.



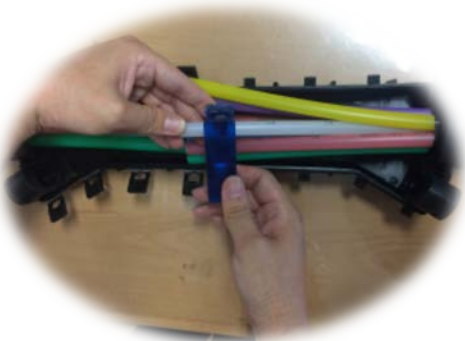
Make a hole of rubber sealing cap to fix the microduct.



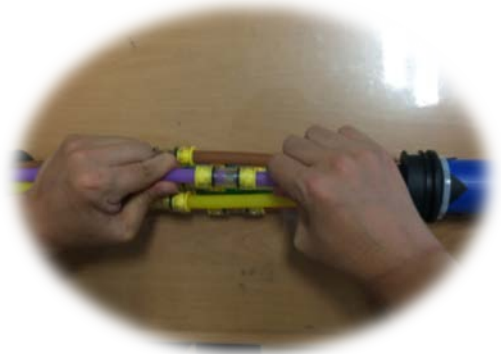
Insert microduct inside rubber cap and fix with cable ties.



Align microtubes from both sides.



Cut microtubes.



Connect microtubes outside of closure.



After microtubes connection, sort tubes in zip zap shape.



Assemble the cover and connect the hooks.



This specification is intended as a guide only. Whilst the information it contains is believed to be correct, KNET I can take no responsibility for action taken based on the information contained in this document. KNET reserved the right to make changes to this document without notice. All sales of product are subject to KNET's terms and conditions of sales only.
 Any unauthorized copying of this document or our products is prohibited and KNET will take action to prevent any infringement of it rights and to claim damages for the loss that it suffers.